



WinActor Chrome Agent Installation Manual

NTT ADVANCED TECHNOLOGY CORPORATION

Contents

1. Introduction.....	1
1.1. Operating environment	1
1.2. Trademarks	1
1.3. Notes on this manual	2
1.4. Limitations	2
2. Installation procedure on Google Chrome	3
2.1. Online installation procedure on Google Chrome	3
2.2. Off-line installation procedure on Google Chrome	8
3. Installation procedure on Microsoft Edge.....	12
3.1. Online installation procedure on Microsoft Edge.....	12
3.2. Off-line installation procedure on Microsoft Edge.....	18
4. Uninstallation procedure from Google Chrome	22
5. Uninstallation procedure from Microsoft Edge.....	23

WinActor Chrome Agent Installation Manual

1. Introduction

This manual describes the installation and uninstallation procedures of WinActor7 Browser Agent for Chrome and Edge.

By installing WinActor7 Browser Agent, operations on the web browser Google Chrome or Microsoft Edge (Chromium) can be recorded by WinActor.

- ※ The term “Microsoft Edge” in this document refers to “Microsoft Edge (chromium).”
On “Microsoft Edge (EdgeHTML),” which is sometimes called EdgeHTML or Legacy, the Chromium extensions does not work.
Please do not confuse them.

1.1. Operating environment

The version of web browsers to be operated with WinActor7 Browser Agent for Chrome and Edge is shown in the table below. The OS environment complies with the conditions of WinActor.

Table 1-1. Version of Google Chrome

No.	Web browser	Version
1	Google Chrome	100 or later (Official Build)
2	Microsoft Edge	100 or later (Official Build)

1.2. Trademarks

The names described below and other names of companies and products in this document are trademarks or registered trademarks of their respective companies. The ™, ®, and © marks are omitted in this document.

- WinActor is a registered trademark of NTT ADVANCED TECHNOLOGY CORPORATION.
- Microsoft, Windows*1, Microsoft Edge, Excel, and VBScript*2 are trademarks or registered trademarks of Microsoft Corporation in the United States and other countries.
 - *1 The official name of Windows is Microsoft Windows Operating System.
 - *2 The official name of VBScript is Microsoft Visual Basic Scripting Edition.
- The names of other companies and products are trademarks or registered trademarks of their respective companies.

WinActor Chrome Agent Installation Manual

1.3. Notes on this manual

- The copyright notice "Copyright © 2013-2025 NTT, Inc. & NTT ADVANCED TECHNOLOGY CORPORATION" attached to this manual and the provided software cannot be changed or deleted.
The copyright of this manual belongs to NTT, Inc. and NTT ADVANCED TECHNOLOGY CORPORATION.
- The descriptions in this manual assume that users understand Windows operations and functions. For information that is not described in this manual, see the documents provided by Microsoft.

1.4. Limitations

The following are limitations on recording operations on a web browser by WinActor using WinActor7 Browser Agent for Chrome and Edge.

- The page for recording will be identified by its document title. If there is a page or a tab with the same document title as the page for recording, operations on both pages will be recorded.
- Screenshots associated with the recorded actions will not be taken.
- "Set value" operation (drag and drop from the Variable list) cannot be used during recording.
- During "Get value" operation, a target element will not be highlighted by hovering the mouse over it.
- If you want to cancel "Get value" operation, press the ESC key.
- The screenshots of Google Chrome used in this manual are from Google Chrome version 100.0 and Microsoft Edge version 100.0. Note that the appearance may differ depending on your Google Chrome version or settings.
- Although the extension name "WinActor7 Browser Agent" is used in this document, the extension name "WinActor7 Browser Agent for WinActor Ver.X.Y," where "X.Y" represents a version number of WinActor, is used on the browser operated by WinActor v7.6.0 or newer. Therefore, users of WinActor7.6.0 or newer shall read "WinActor7 Browser Agent" in this document as "WinActor7 Browser Agent for WinActor Ver.X.Y."



If the version of the WebDriver WinActor uses does not match the version of Google Chrome or Microsoft Edge (Chromium), the WebDriver may not work properly. In such a case, see "WinActor Browser Operation Scenario Creation Manual" and install the WebDriver that match your Web browser.

WinActor Chrome Agent Installation Manual

2. Installation procedure on Google Chrome

2.1. Online installation procedure on Google Chrome

In general, the online installation procedure works on Google Chrome.

In special cases, such as unavailability of the network connection, where the online installation is impossible, choose the off-line installation procedure described in the next section.

- (1) Launch WinActor and select "Tool," "Install extensions," and "Install WinActor7 Browser Agent for Chrome" consecutively.

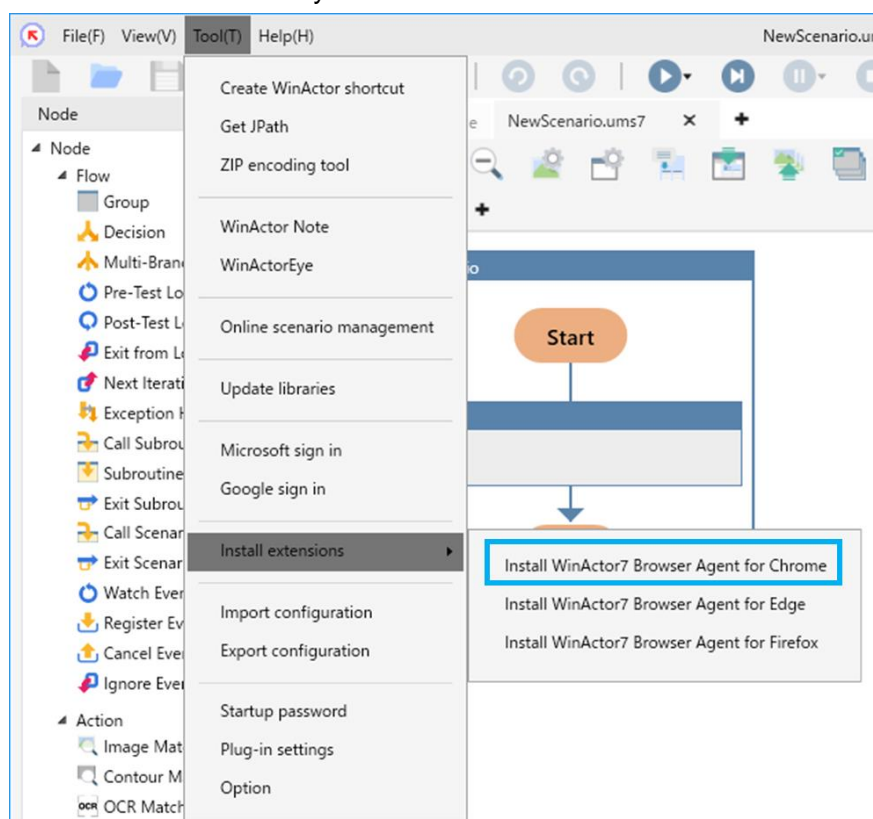


Figure 2-1. Selecting "Install WinActor7 Browser Agent for Chrome"

WinActor Chrome Agent Installation Manual

- (2) A confirmation dialog "Do you want to install WinActor7 Browser Agent?" appears.
Click the 'OK' button.

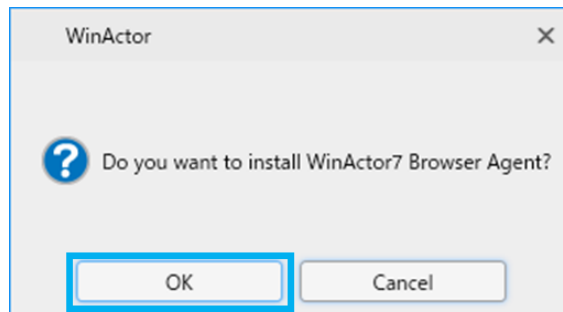


Figure 2-2. Clicking the 'OK' button to confirm the installation

- (3) Depending on the environment, the Windows User Account Control (UAC) confirmation window will appear. Click 'Yes' to continue.
- (4) A message box indicating that WinActor7 Browser Agent has been registered in the registry appears.
Click the 'OK' button.

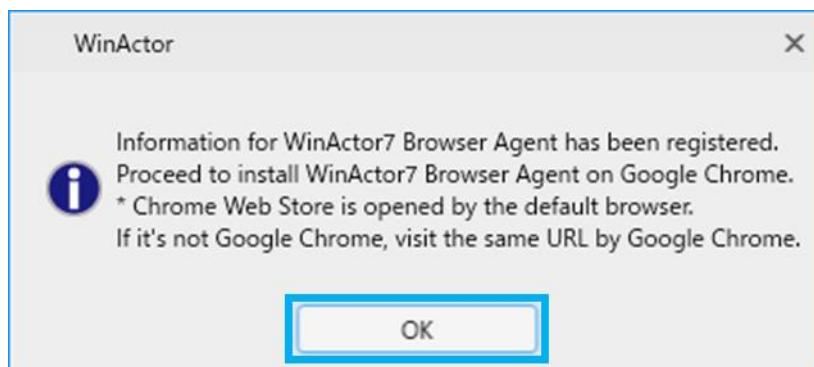


Figure 2-3. Clicking the 'OK' button after registration in the registry

WinActor Chrome Agent Installation Manual

(5) The "WinActor7 Browser Agent" page of the chrome web store will be opened in the default browser.

If it is opened in a browser other than Google Chrome, reopen it in Google Chrome.

(6) Click the "Add to Chrome" button in the WinActor7 Browser Agent page.

* The confirmation dialog appears. If you agree with the required permissions, click the "Add extension" button.

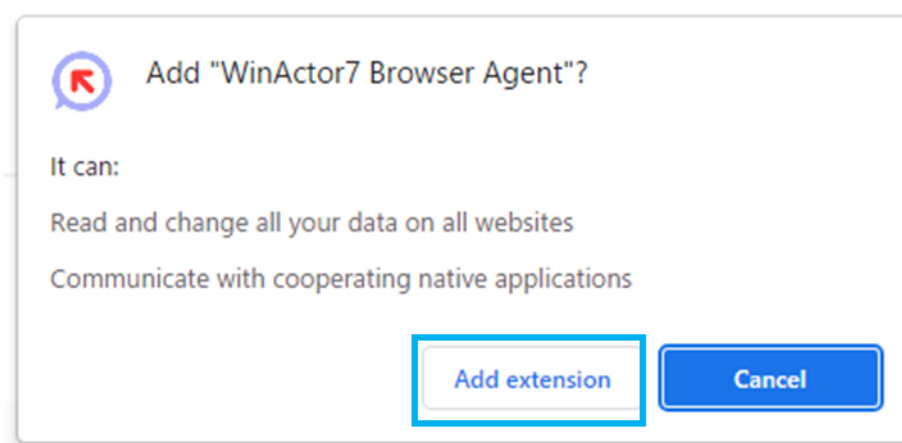
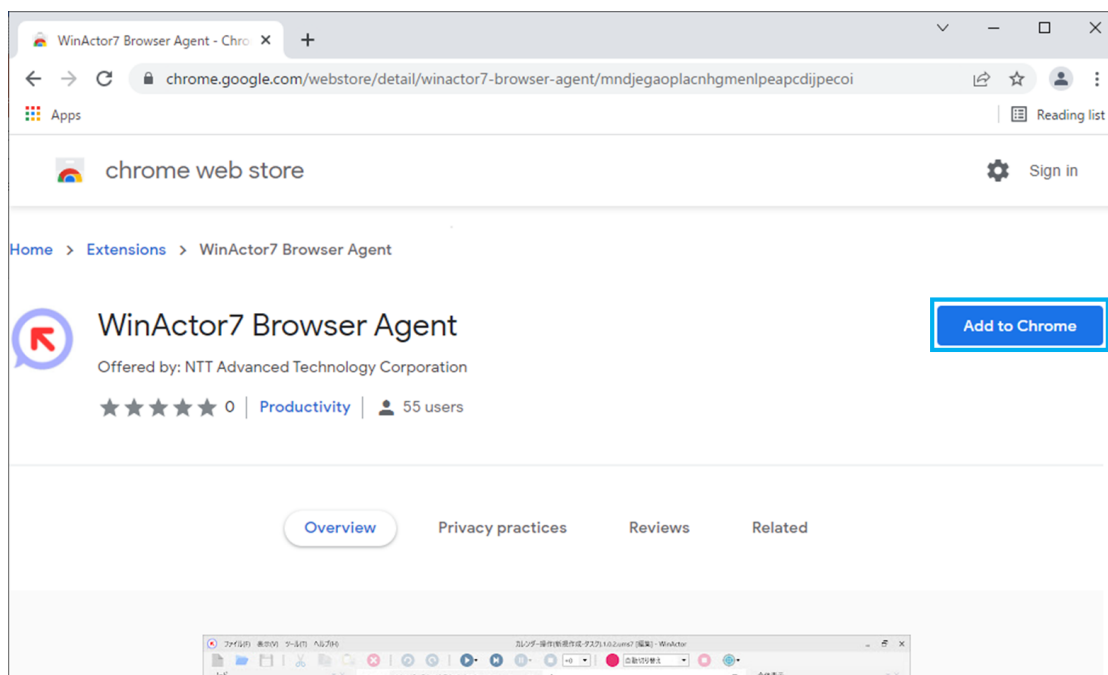


Figure 2-4. Clicking the "Add to Chrome" and "Add extension" buttons

WinActor Chrome Agent Installation Manual

(7) Close all Google Chrome windows and restart Google Chrome.

(8) Open the "chrome://extensions" page in Google Chrome and make sure that "WinActor7 Browser Agent" is displayed.

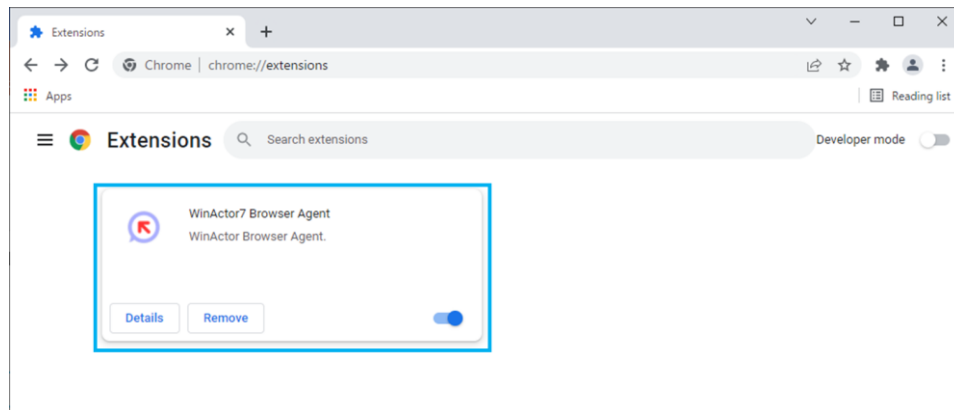


Figure 2-5. Confirming the display of "WinActor7 Browser Agent"

WinActor Chrome Agent Installation Manual

(9) If you want to record the operations of local HTML files, click "Details" on "WinActor7 Browser Agent" and set "Allow access to file URLs" to ON.

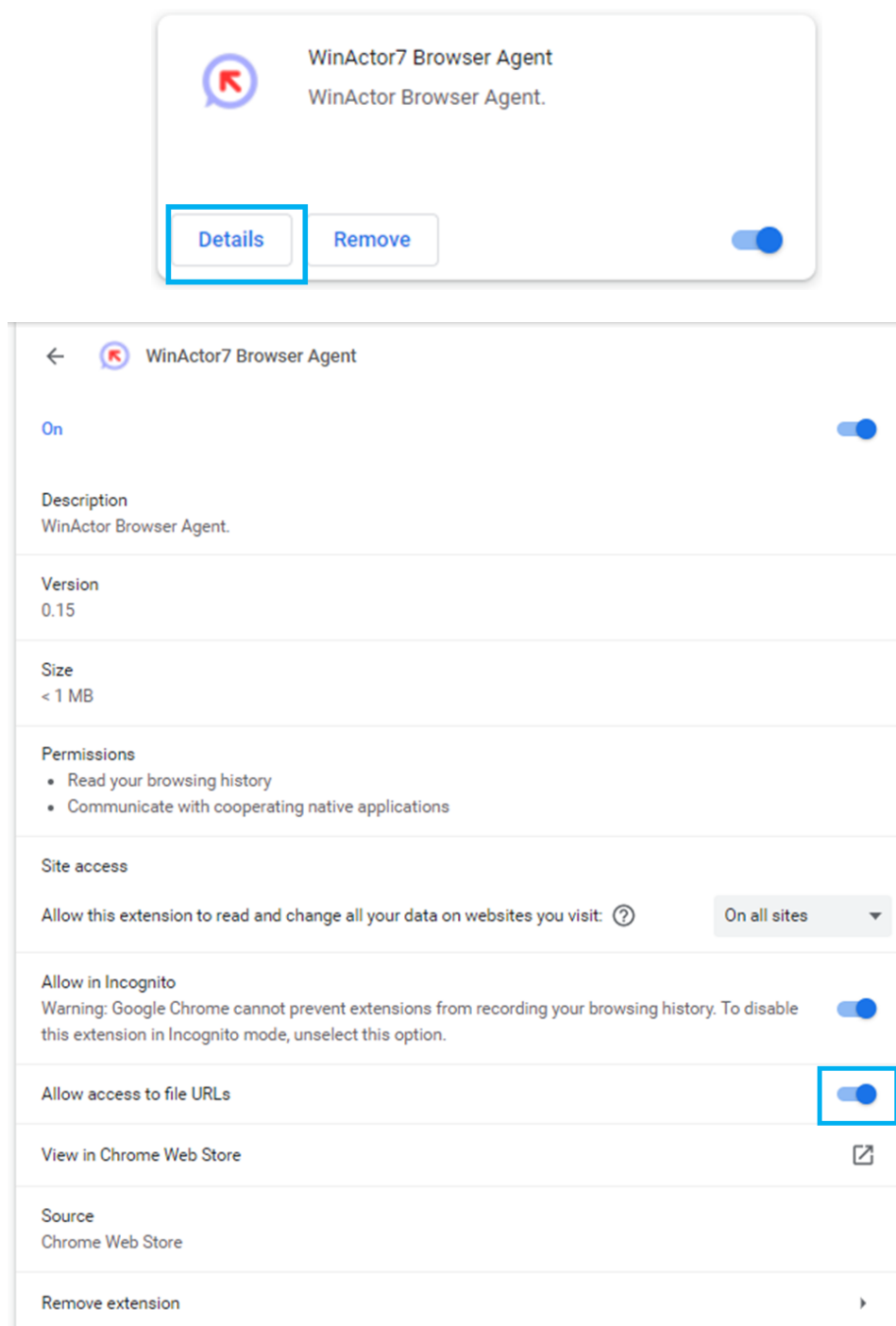


Figure 2-6 Setting "Allow access to file URLs" to ON

WinActor Chrome Agent Installation Manual

2.2. Off-line installation procedure on Google Chrome

In general, the online installation procedure in the previous section works on Google Chrome. In special cases, such as unavailability of the network connection, where the online installation is impossible, choose the off-line installation procedure.

- (1) Close all the Google Chrome windows.
- (2) Select "Command Prompt" in the "Start" menu. It is under "Windows System," or under "Windows Tools" under "All apps."
- (3) Launch the "Command Prompt," and change current directory to "[*Installation folder of WinActor*]\lib\ChromeAgent\host\."

Example1: When "C:\Program Files (x86)\WinActor7" Is the installation folder of WinActor.

```
> cd C:\Program Files (x86)\WinActor7\lib\ChromeAgent\host
```

Example2: When "WinActor7" on the "Desktop" Is the installation folder of WinActor.

```
> cd C:\Users\[User name]\Desktop\WinActor7\lib\ChromeAgent\host
```

- (4) Execute the following command.

```
> WA7ChromeNativeMessagingHost.Installer.exe /chrome
```

- (5) Open the Google Chrome, and go to the page "chrome://extensions."

- (6) Set "Developer mode" to ON.

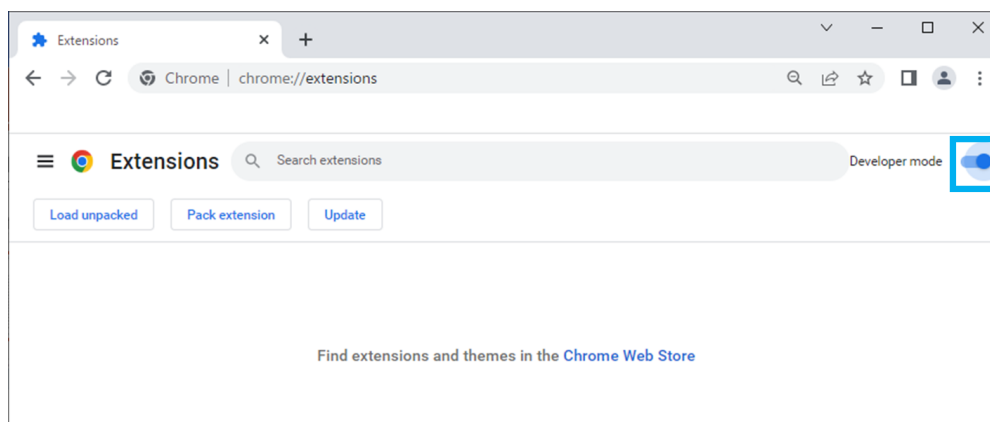


Figure 2-7 Setting "Developer mode" to ON

WinActor Chrome Agent Installation Manual

- (7) Open the [Installation folder of WinActor]\lib\ChromeAgent\app" folder, and drag and drop the file "WinActor7BrowserAgent_xxx.crx," the "xxx" part of the filename depends on the version, on the Google Chrome.

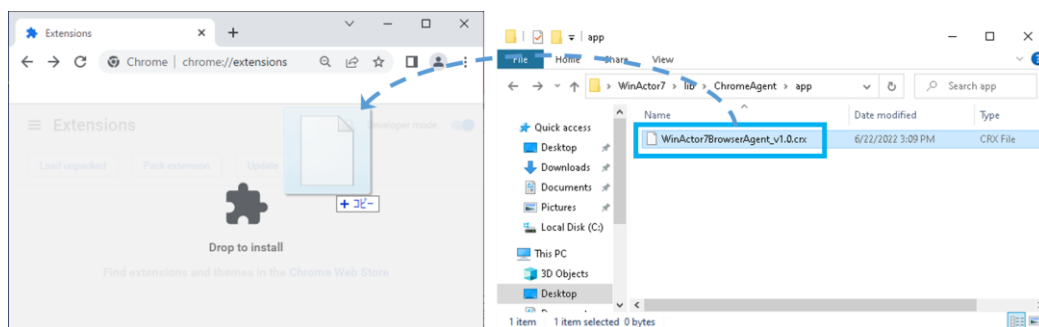


Figure 2-8 Dragging and dropping the file on the Google Chrome

- (8) The following confirmation dialog is displayed. Click the "Add extension" button.

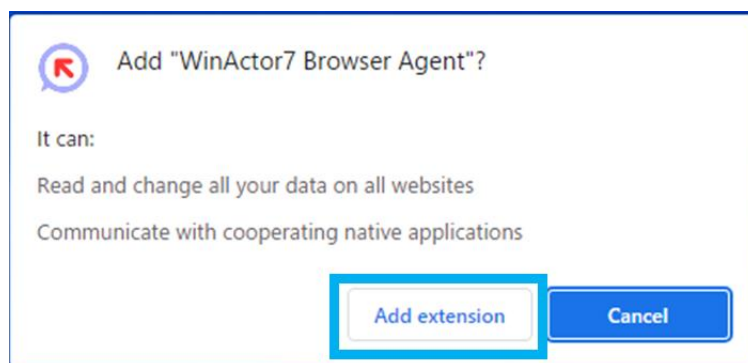


Figure 2-9 Clicking "Add extension " button

- (9) Set "Developer mode" to OFF.

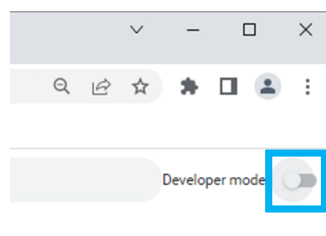


Figure 2-10 Setting "Developer mode" to OFF

WinActor Chrome Agent Installation Manual

(10) Close all the Google Chrome windows, and relaunch Google Chrome.

(11) Go to the page “chrome://extensions” on the Google Chrome, and confirm that the extension “WinActor7 Browser Agent” is shown on the page.

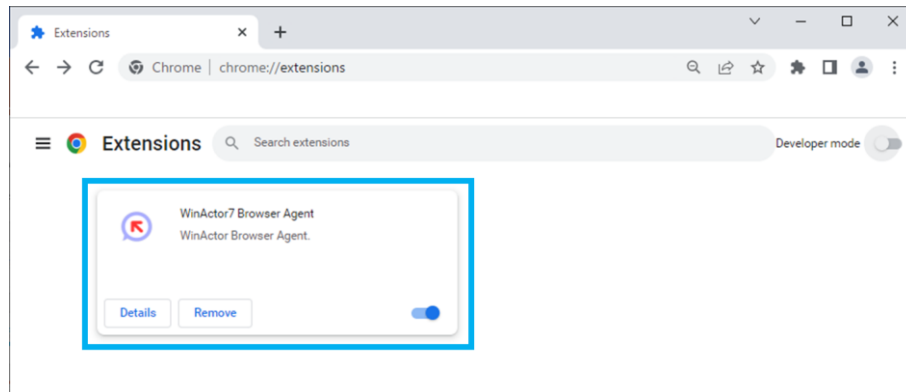


Figure 2-11 Confirming " WinActor7 Browser Agent " extension

WinActor Chrome Agent Installation Manual

(12) To record the operations on local HTML files, click the “Details” button on the “WinActor7 Browser Agent” extension and set “Allow access to file URLs” to ON.

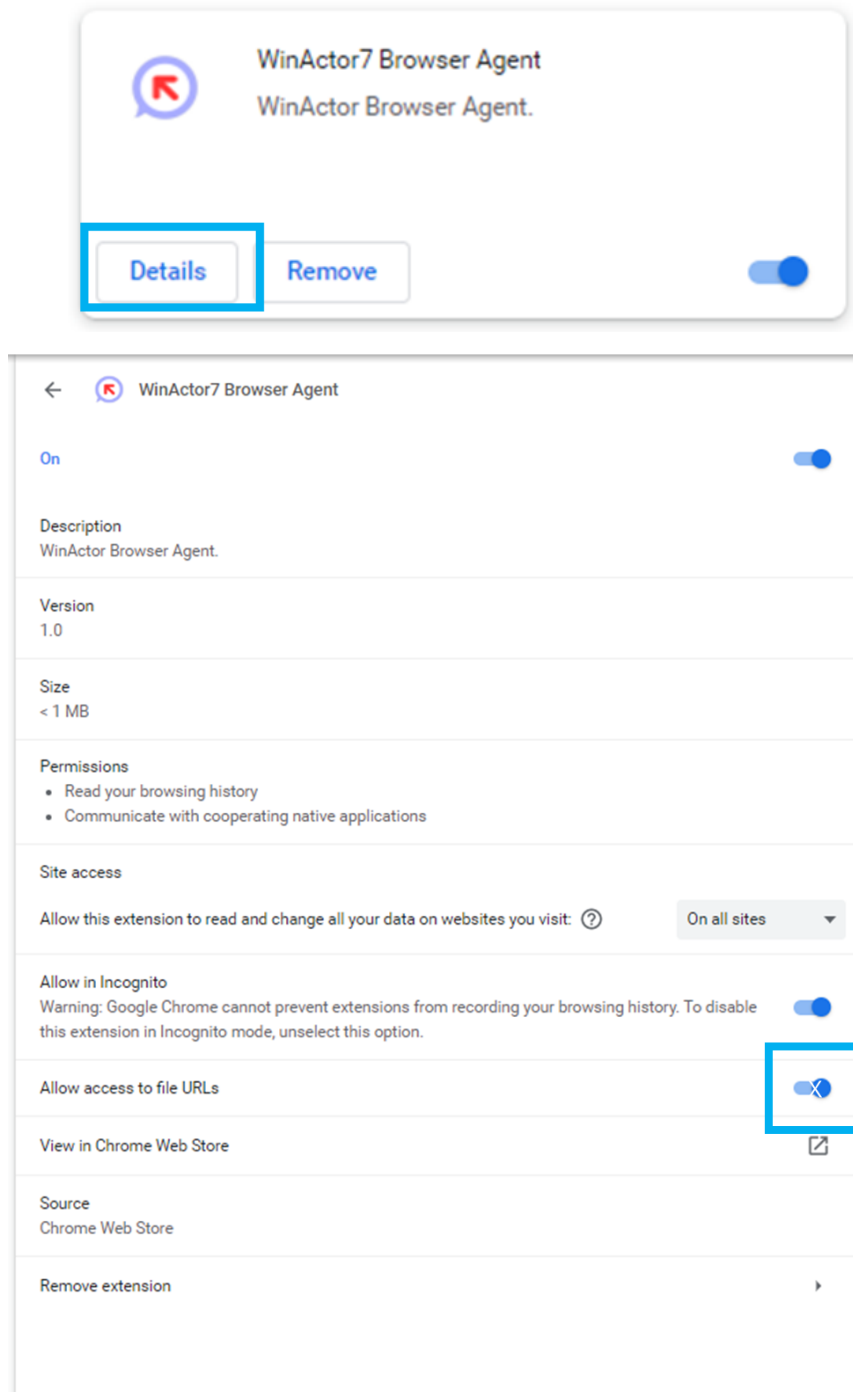


Figure 2-12 Setting “Allow access to file URLs” to ON

WinActor Chrome Agent Installation Manual

3. Installation procedure on Microsoft Edge

3.1. Online installation procedure on Microsoft Edge

In general, the online installation procedure works on Microsoft Edge.

In special cases, such as unavailability of the network connection, where the online installation is impossible, choose the off-line installation procedure described in the next section.

- (1) Launch WinActor and select "Tool," "Install extensions," and "Install WinActor7 Browser Agent for Edge" consecutively.

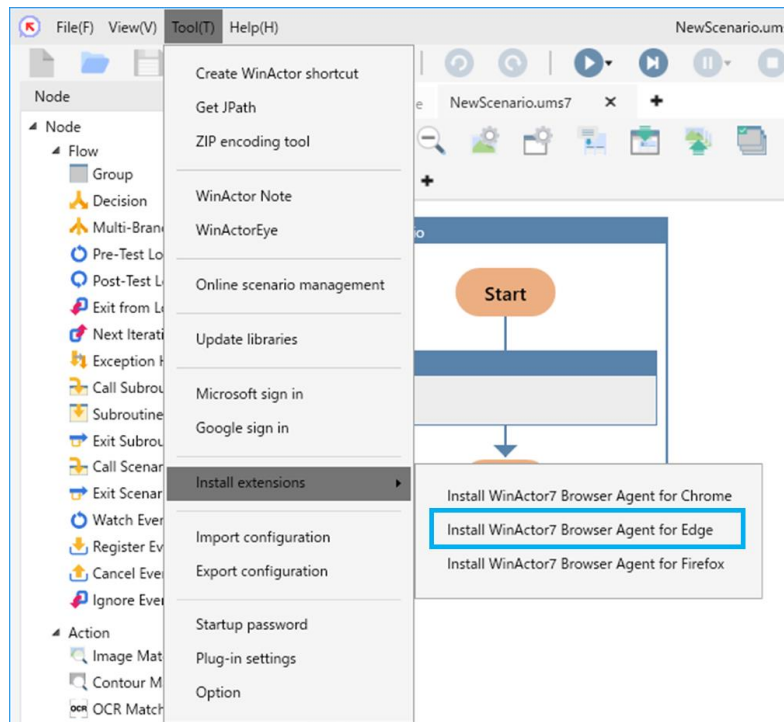


Figure 3-1. Selecting "Install WinActor7 Browser Agent for Edge"

WinActor Chrome Agent Installation Manual

- (2) A confirmation dialog "Do you want to install WinActor7 Browser Agent on Microsoft Edge?" appears.

Click the 'OK' button.

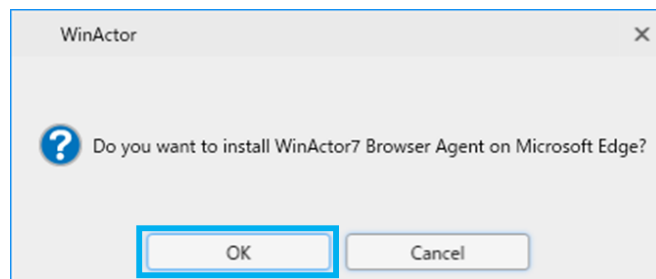


Figure 3-2. Clicking the 'OK' button to confirm the installation

- (3) Depending on the environment, the Windows User Account Control (UAC) confirmation window will appear. Click 'Yes' to continue.

- (4) A message box indicating that WinActor7 Browser Agent has been registered in the registry appears.

Click the 'OK' button.

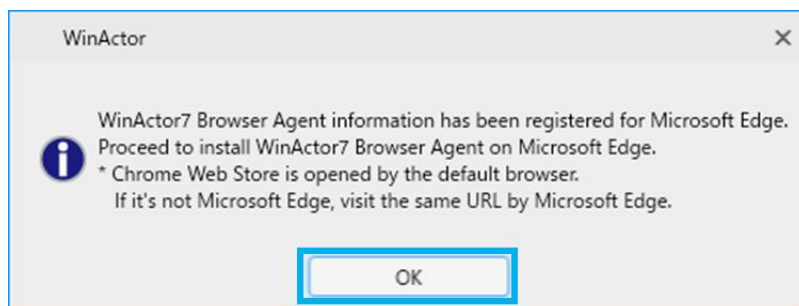


Figure 3-3. Clicking the 'OK' button after registration in the registry

- (5) The "WinActor7 Browser Agent" page of the chrome web store will be opened in the default browser.

If it is opened in a browser other than Microsoft Edge, reopen it in Microsoft Edge.

WinActor Chrome Agent Installation Manual

- (6) Click the “Allow extensions from other stores” button when you are asked to allow extensions.

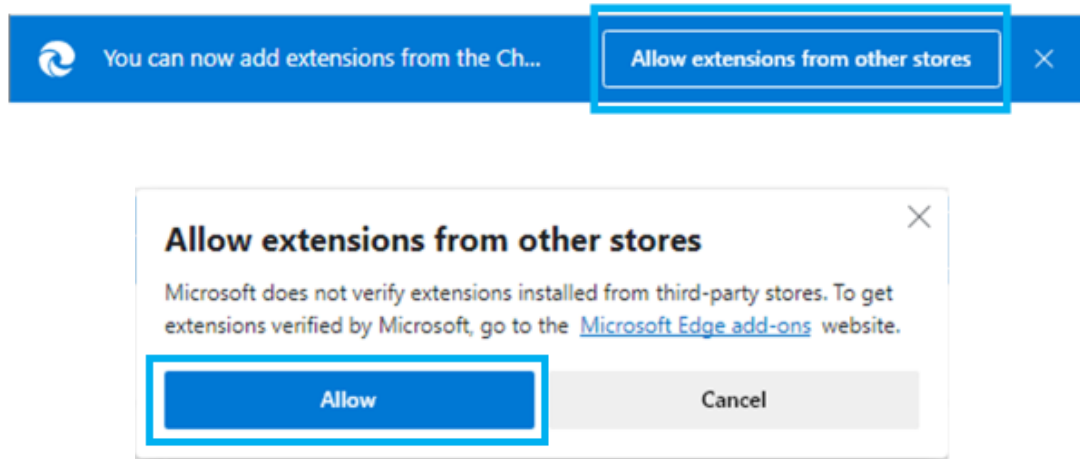


Figure 3-4. Clicking the “Allow extensions from other stores” button

WinActor Chrome Agent Installation Manual

(7) Click the "Add to Chrome" button in the WinActor7 Browser Agent page.

* The confirmation dialog appears. If you agree with the required permissions, click the "Add extension" button.

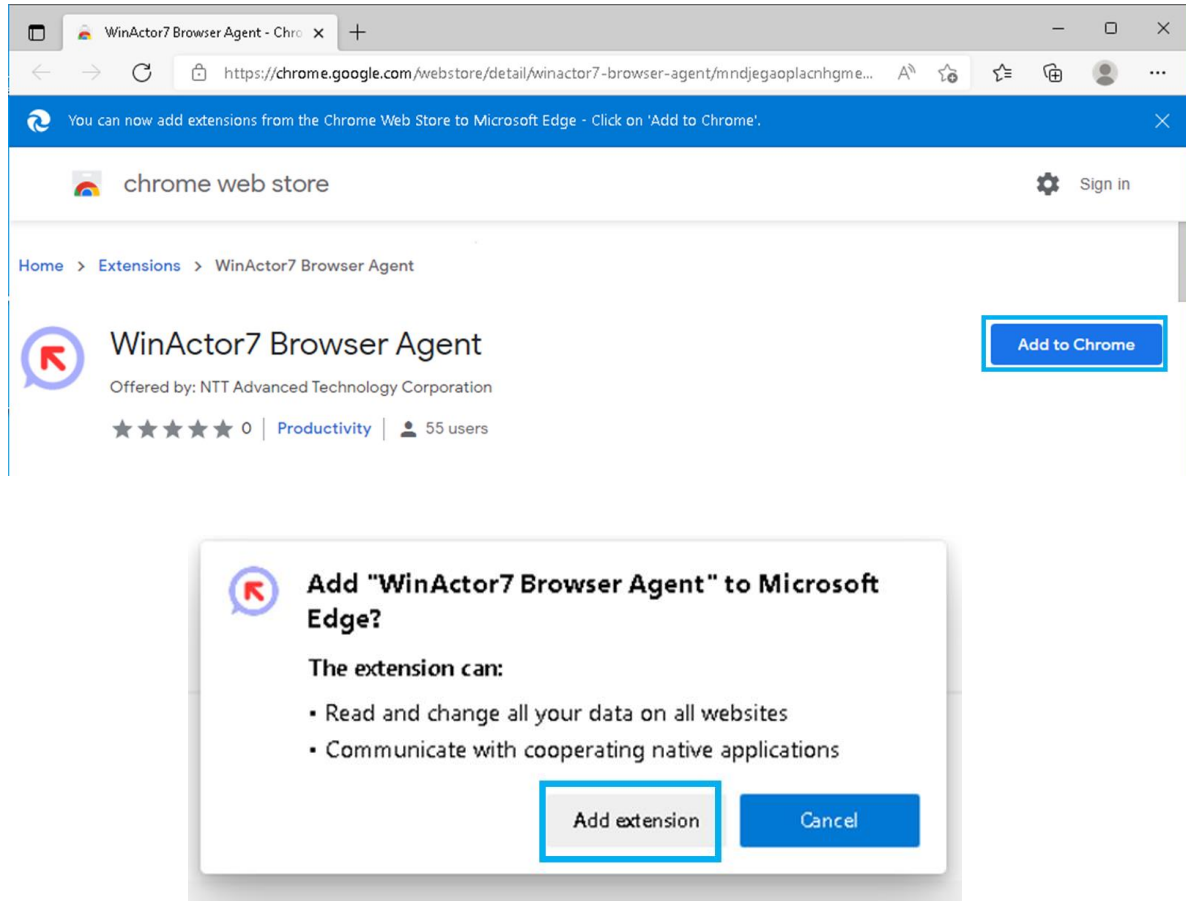


Figure 3-5. Clicking the "Add to Chrome" and "Add extension" buttons

WinActor Chrome Agent Installation Manual

- (8) Close all Microsoft Edge windows and restart Microsoft Edge.
- (9) Open the "edge://extensions" page in Microsoft Edge and make sure that "WinActor7 Browser Agent" is displayed.

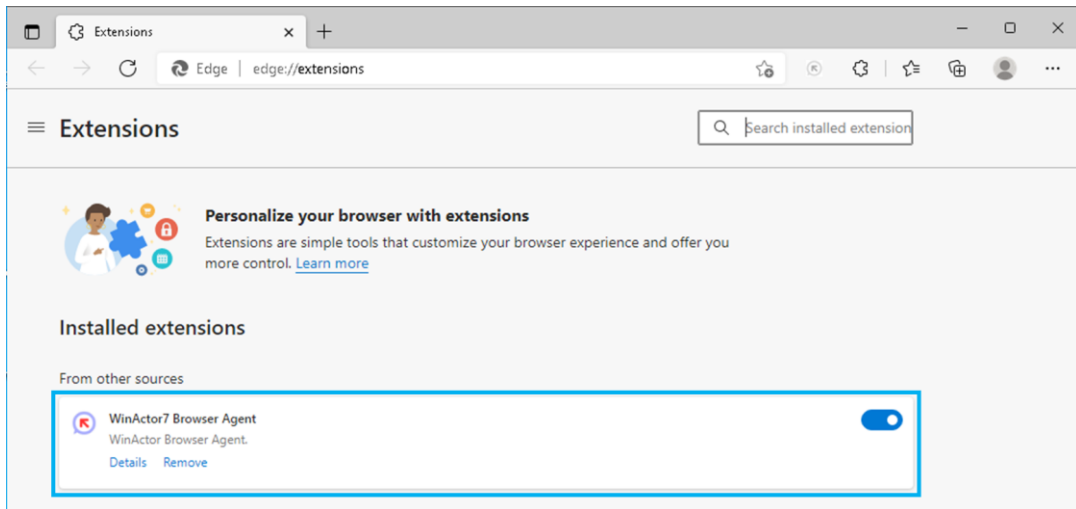


Figure 3-6. Confirming the installation of “WinActor7 Browser Agent” extension

WinActor Chrome Agent Installation Manual

- (10) If you want to record the operations of local HTML files, click "Details" on "WinActor7 Browser Agent" and set "Allow access to file URLs" to ON.

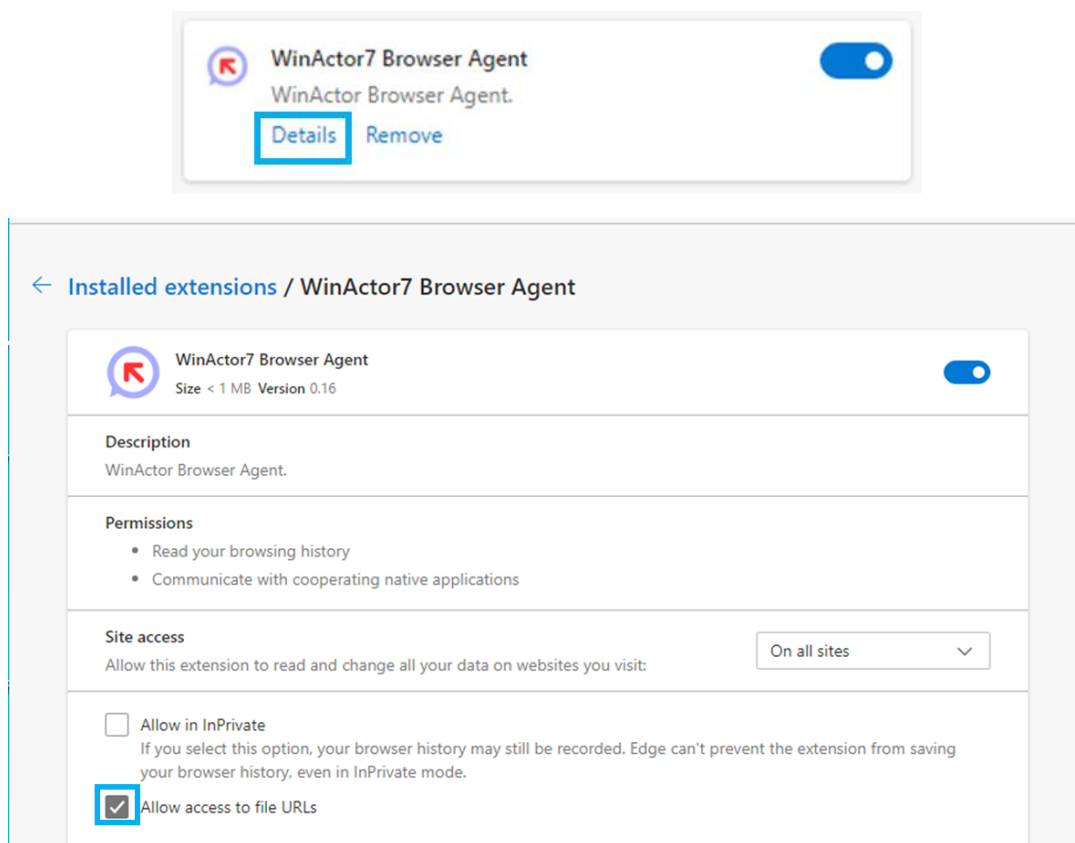


Figure 3-7. Setting "Allow access to file URLs" to ON

WinActor Chrome Agent Installation Manual

3.2. Off-line installation procedure on Microsoft Edge

In general, the online installation procedure in the previous section works on Microsoft Edge. In special cases, such as unavailability of the network connection, where the online installation is impossible, choose the off-line installation procedure.

(1) Close all the Microsoft Edge windows.

(2) Select “Command Prompt” in the “Start” menu. It is under “Windows System,” or under “Windows Tools” under “All apps.”

(3) Launch the “Command Prompt,” and change current directory to “[*Installation folder of WinActor*]\lib\ChromeAgent\host\.”

Example1: When “C:\Program Files (x86)\WinActor7” Is the installation folder of WinActor.

```
> cd C:\Program Files (x86)\WinActor7\lib\ChromeAgent\host
```

Example2: When “WinActor7” on the “Desktop” Is the installation folder of WinActor.

```
> cd C:\Users\[User name]\Desktop\WinActor7\lib\ChromeAgent\host
```

(4) Execute the following command.

```
> WA7ChromeNativeMessagingHost.Installer.exe /edge
```

(5) Open the Microsoft Edge, and go to the page “edge://extensions.”

WinActor Chrome Agent Installation Manual

(6) Set “Developer mode” to ON.

When the window of the Microsoft Edge is not wide enough, the “Extensions” sidebar that includes the “Developer mode” may not be displayed. In that case, expand the Microsoft Edge window to have enough width.

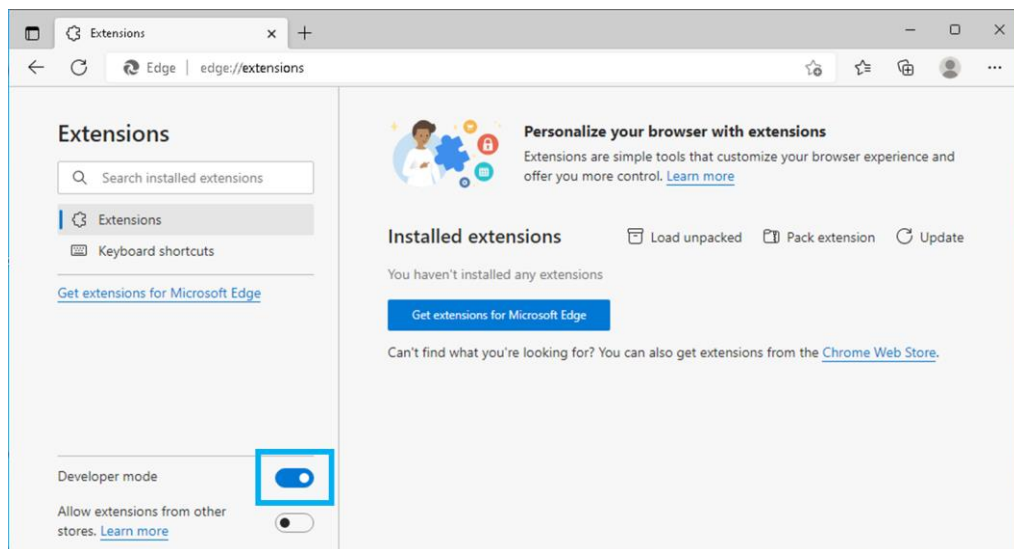


Figure 3-8. Setting "Developer mode" to ON

(7) Open the [*Installation folder of WinActor*]\lib\ChromeAgent\app\” folder, and drag and drop the file “WinActor7BrowserAgent_xxx.crx,” the “xxx” part of the filename depends on the version, on the Microsoft Edge.

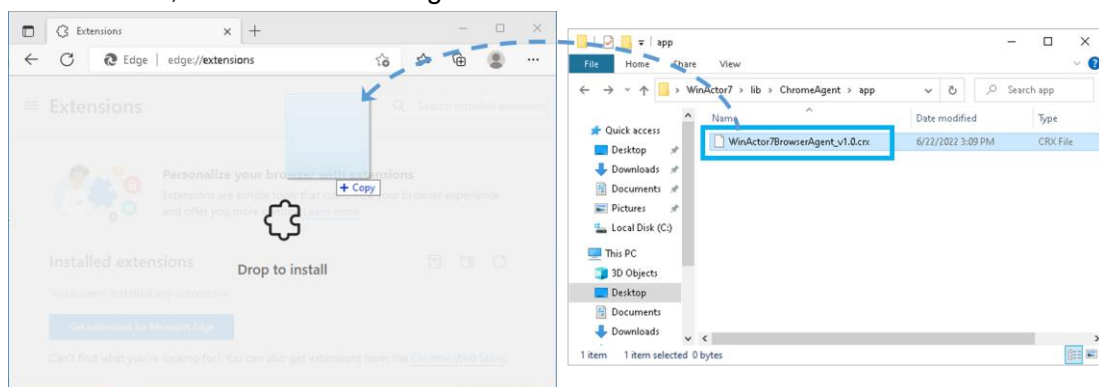


Figure 3-9. Dragging and dropping the file on the Microsoft Edge

WinActor Chrome Agent Installation Manual

(8) The following confirmation dialog is displayed. Click the “Add extension” button.

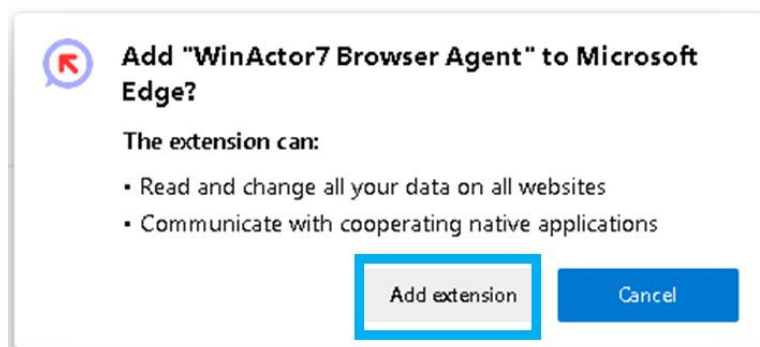


Figure 3-10. Clicking "Add extension " button

(9) Set “Developer mode” to OFF.

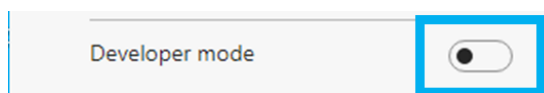


Figure 3-11. Setting "Developer mode" to OFF

(10) Close all the Microsoft Edge windows, and relaunch Microsoft Edge.

(11) Go to the page “chrome://extensions” on the Microsoft Edge, and confirm that the extension “WinActor7 Browser Agent” is shown on the page.

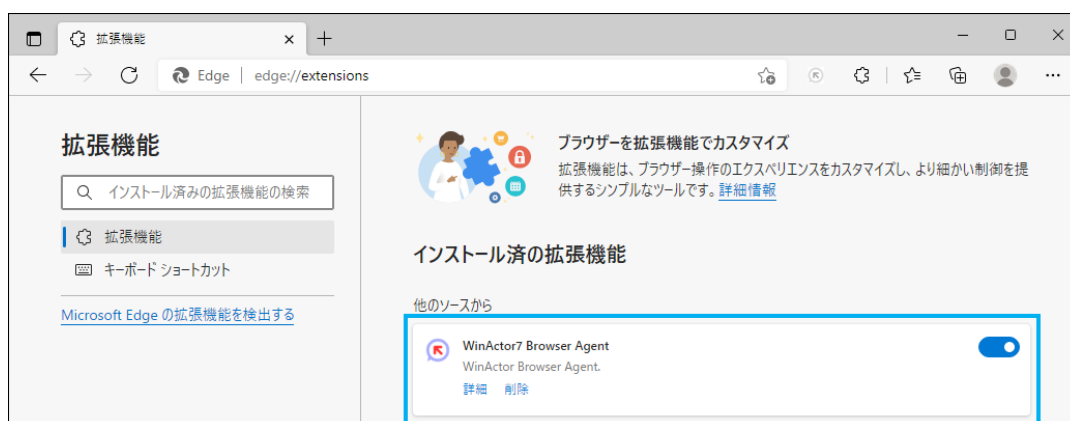


Figure 3-12. Confirming " WinActor7 Browser Agent " extension

WinActor Chrome Agent Installation Manual

(12) To record the operations on local HTML files, click the “Details” button on the “WinActor7 Browser Agent” extension and set “Allow access to file URLs” to ON.

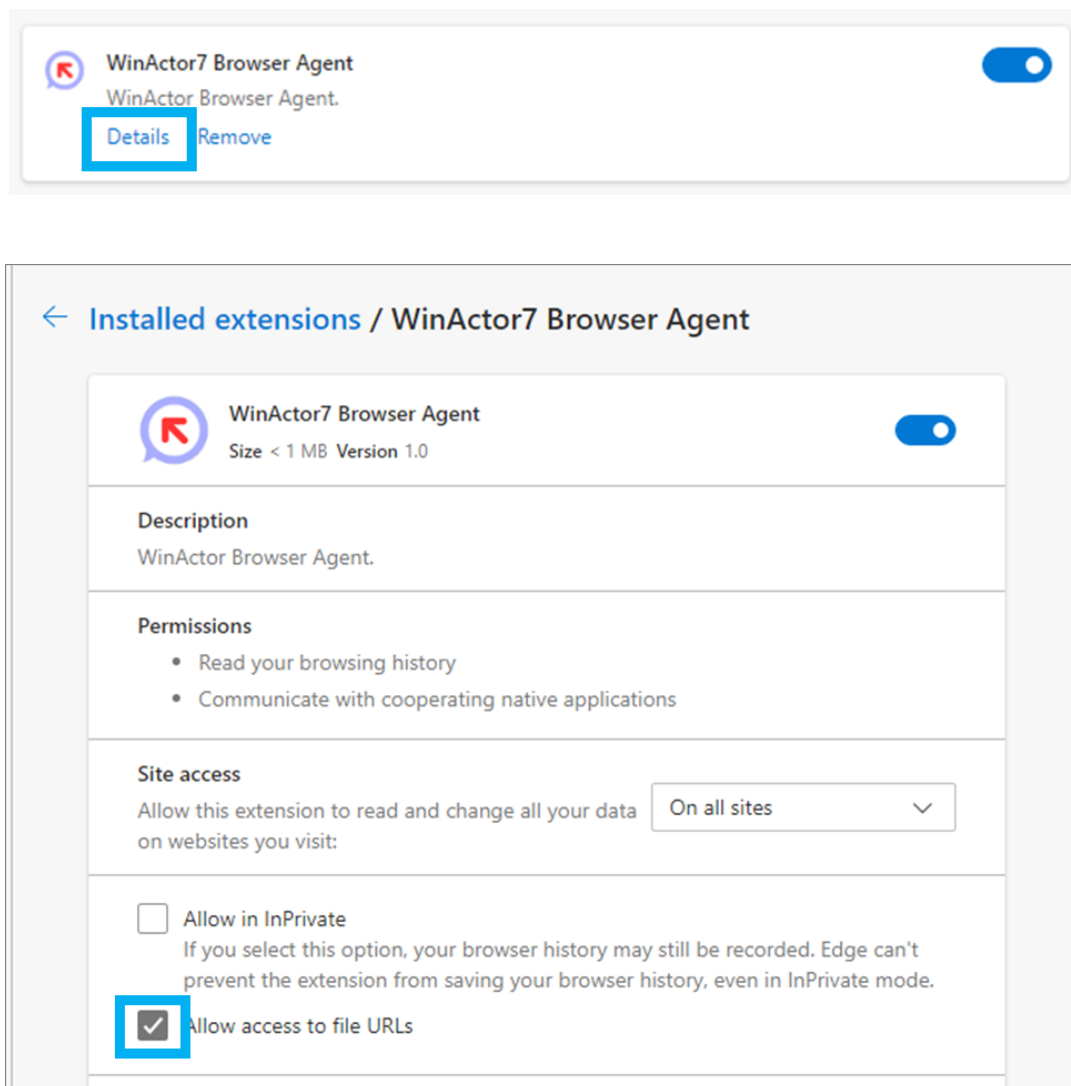


Figure 3-13. Setting “Allow access to file URLs” to ON

WinActor Chrome Agent Installation Manual

4. Uninstallation procedure from Google Chrome

- (1) Close all Google Chrome windows.
- (2) Click "Command Prompt" in "Windows System" in the Start menu.
- (3) Command Prompt launches.

Move the current directory to "[WinActor installation folder]\lib\ChromeAgent\host\."

Command example: (in case that the WinActor installation folder is "C:\Program Files (x86)\WinActor7")

```
> cd C:\Program Files (x86)\WinActor7\lib\ChromeAgent\host
```

Command example: (in case that the WinActor installation folder is "WinActor7" on the desktop)

```
> cd C:\Users\Username\Desktop\WinActor7\lib\ChromeAgent\host
```

- (4) Execute the following command to remove the registry information.

```
> WA7ChromeNativeMessagingHost.Installer.exe /chrome /uninstall
```

- (5) Next, launch Google Chrome and display the "chrome://extensions" page.

- (6) Click the 'Remove' button.

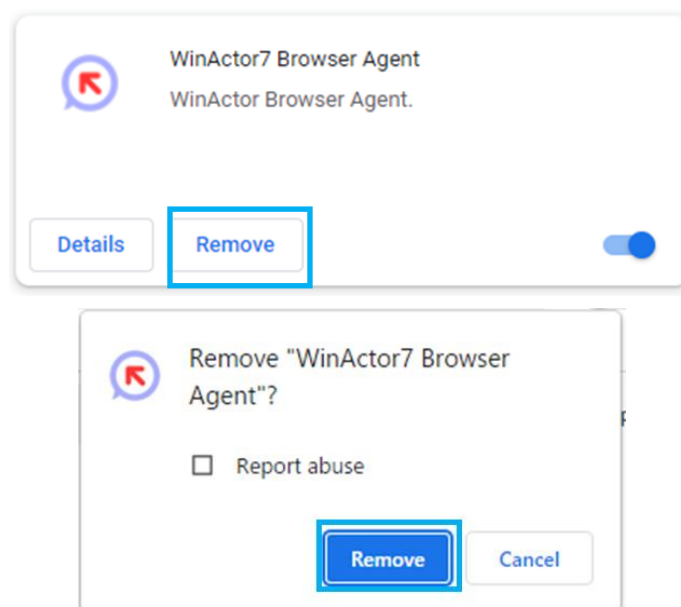


Figure 4-1. Clicking the 'Remove' button

WinActor Chrome Agent Installation Manual

5. Uninstallation procedure from Microsoft Edge

- (1) Close all Microsoft Edge windows.
- (2) Click "Command Prompt" in "Windows System" in the Start menu.
- (3) Command Prompt launches.

Move the current directory to "[WinActor installation folder]\lib\ChromeAgent\host\."

Command example: (in case that the WinActor installation folder is "C:\Program Files (x86)\WinActor7")

```
> cd C:\Program Files (x86)\WinActor7\lib\ChromeAgent\host
```

Command example: (in case that the WinActor installation folder is "WinActor7" on the desktop)

```
> cd C:\Users\Username\Desktop\WinActor7\lib\ChromeAgent\host
```

- (4) Execute the following command to remove the registry information.

```
> WA7ChromeNativeMessagingHost.Installer.exe /edge /uninstall
```

- (5) Next, launch Microsoft Edge and display the "edge://extensions" page.

- (6) Click the 'Remove' button.

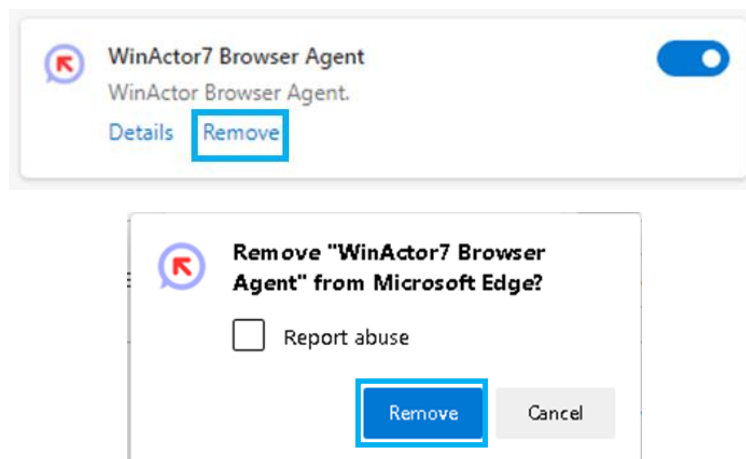


Figure 5-1. Clicking the 'Remove' button



WinActor Chrome Agent Installation Manual

NTT ADVANCED TECHNOLOGY CORPORATION

Copyright © 2013-2025 NTT, Inc. & NTT ADVANCED TECHNOLOGY CORPORATION

This document is protected under copyright law. It is forbidden to duplicate or copy any part or all of this document without prior consent.

WA7-A-20250603
